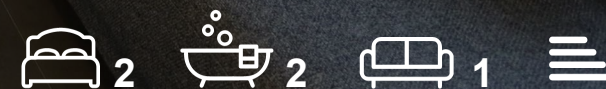




Habberley Cottage Le Clos Du Martin
St Johns Road, St Helier, JE2 3LD

Asking Price £570,000



Habberley Cottage Le Clos

St John's Road, St Helier, JE2 3LD

This charming two-bedroom cottage on the outskirts of St. Helier effortlessly combines charm and modern amenities for a comfortable and stylish living experience. The immaculate interior features a spacious open-plan kitchen, dining, and living area—ideal for both entertaining and relaxing. The principal bedroom includes an en-suite bathroom, complemented by a second double bedroom and a versatile dressing room that could serve as extra storage or a home office. A ground-floor guest bathroom adds convenience, while an additional downstairs utility area enhances functionality. The cottage is equipped with electric heating and double glazing throughout, ensuring warmth and efficiency. Outside, a generous courtyard garden offers a tranquil spot for entertaining, and rare off-street parking accommodates up to four cars, adding to the home's practicality.

Pet Policy - Pets allowed

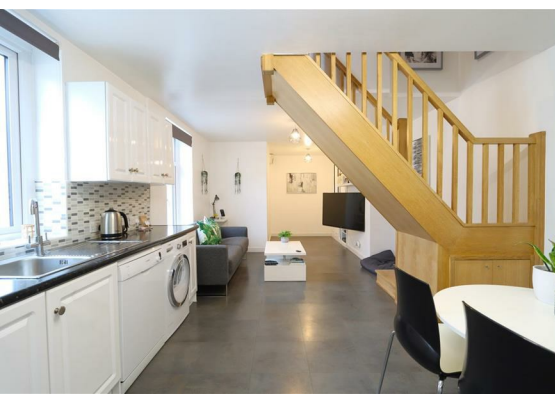
Tenure:
Freehold

Services:
All mains services, (no gas) electric heating, double glazing, wired for fibre broadband.

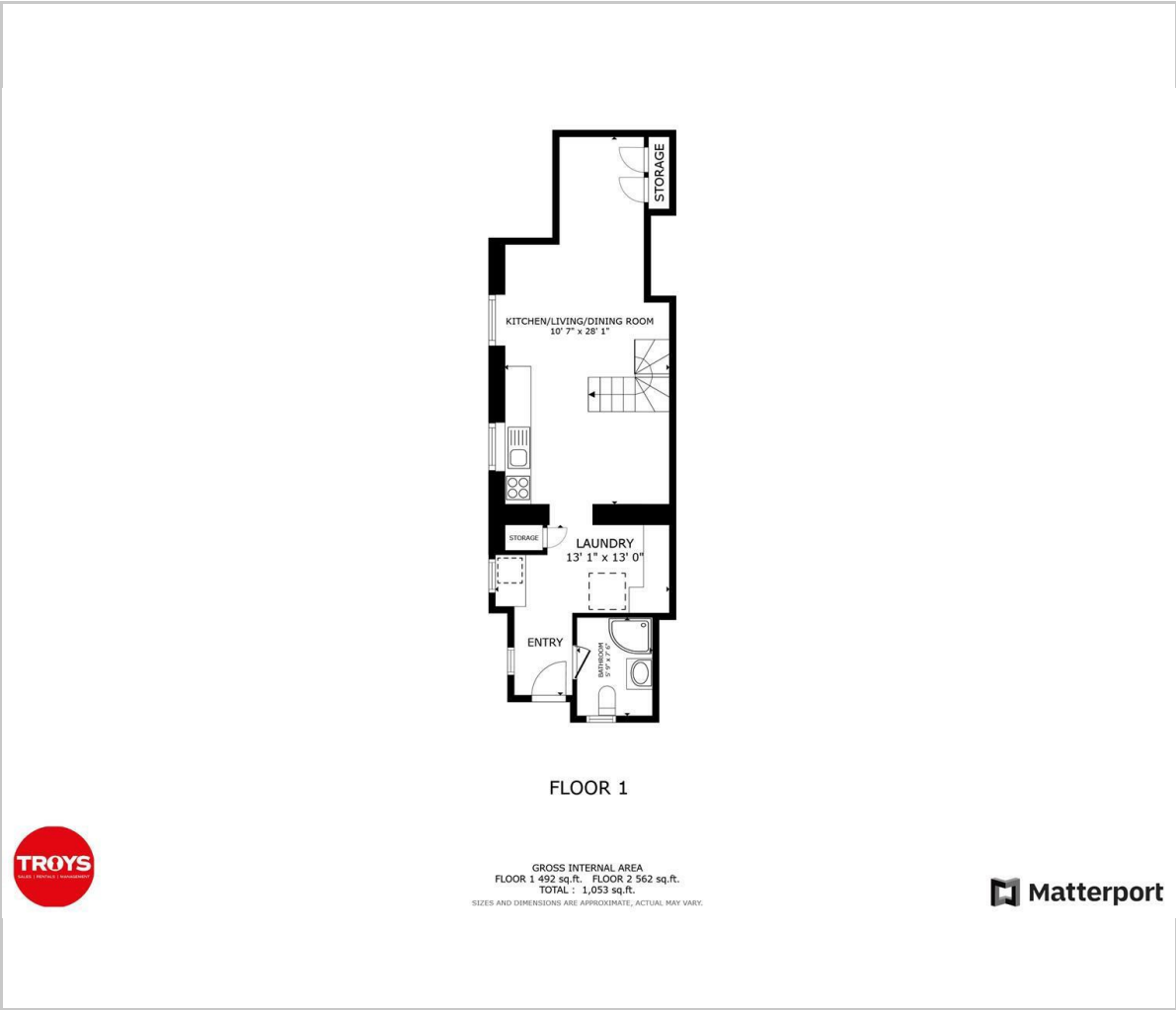
Parking: Yes (4 Cars)

Service Charge:
None





Floor Plan



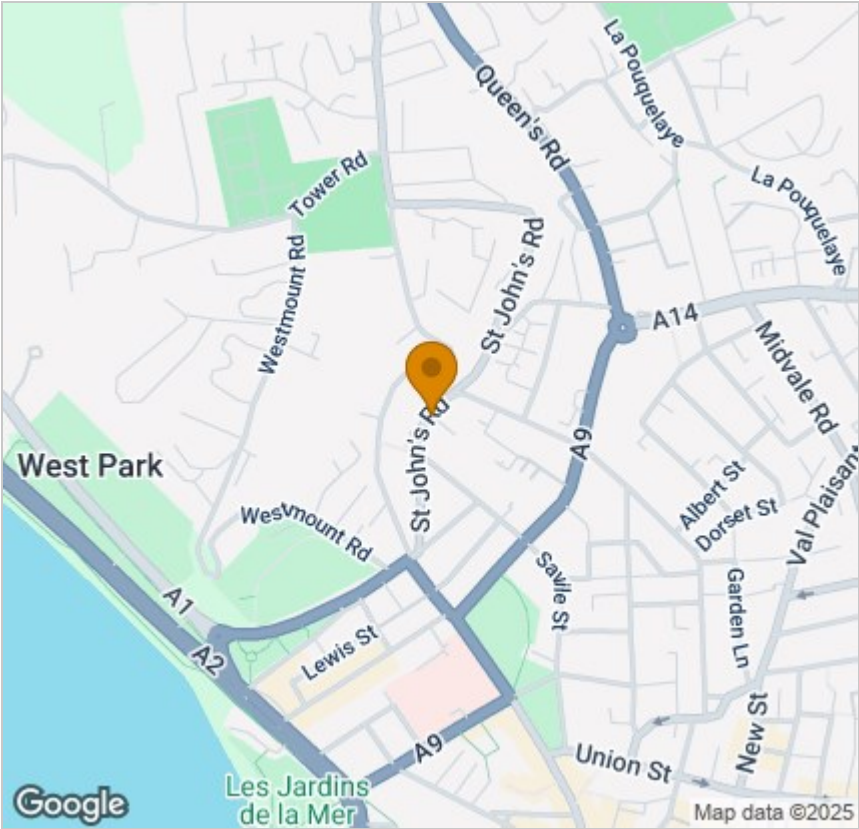
Viewing

Please contact our Troys Estate Agency Ltd Office on 01534 607070 if you wish to arrange a viewing appointment for this property or require further information.

These particulars, whilst believed to be accurate are set out as a general outline only for guidance and do not constitute any part of an offer or contract. Intending purchasers should not rely on them as statements of representation of fact, but must satisfy themselves by inspection or otherwise as to their accuracy. No person in this firms employment has the authority to make or give any representation or warranty in respect of the property.

10 Sand Street, St Helier, Jersey, JE2 3QF
Tel: 01534 607070 Email: duty@troysjsy.com

Area Map



Energy Efficiency Graph

